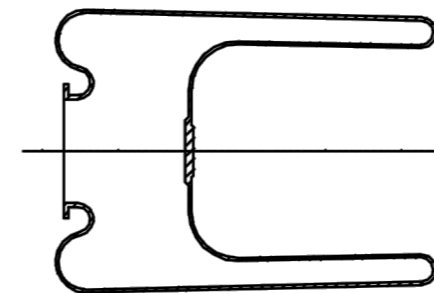
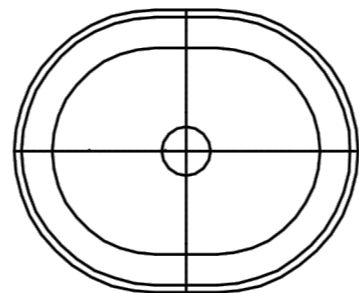


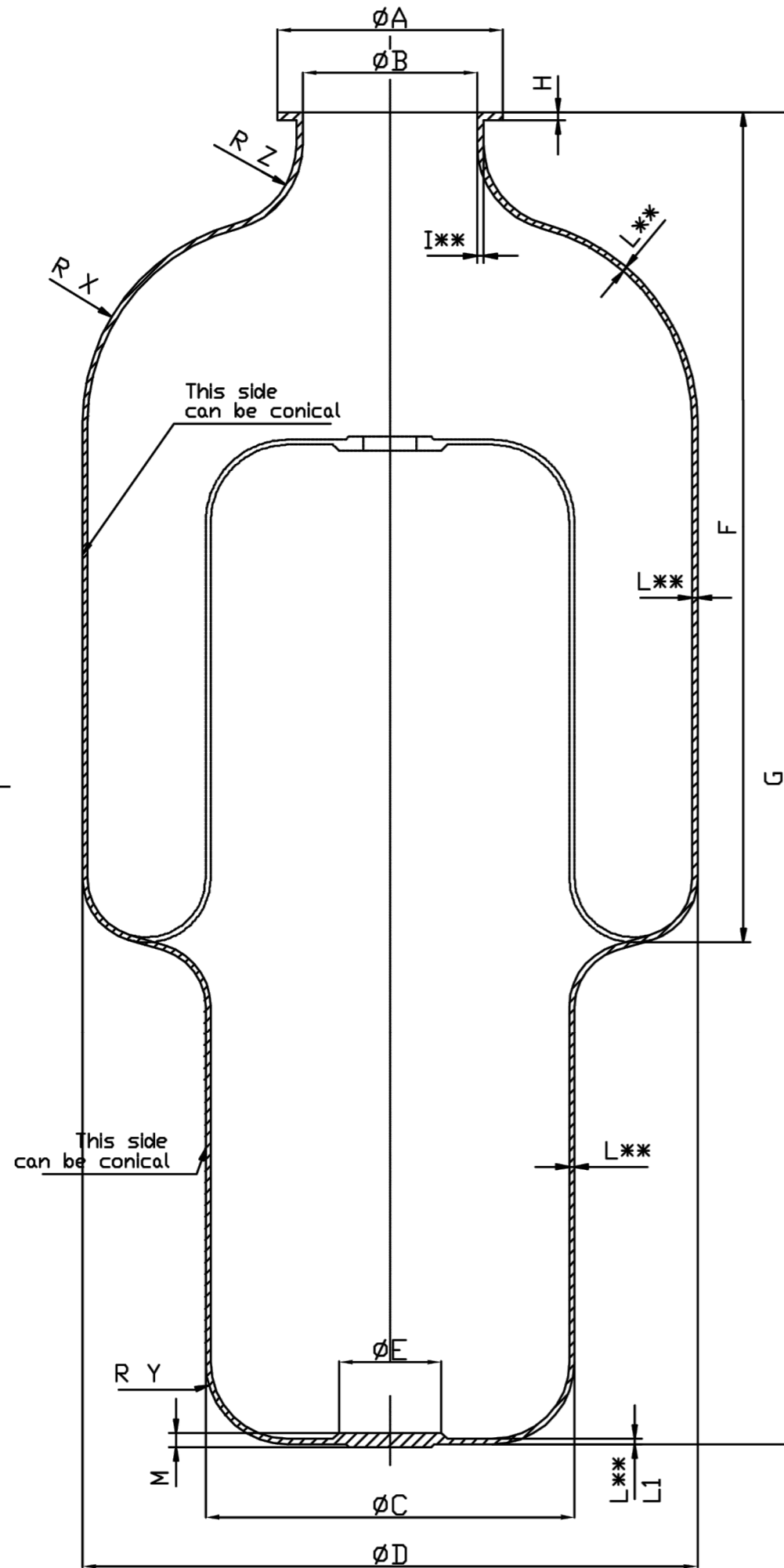
PRELIMINARY

Important notice: Holes for clamping (if needed and in which dimension) have to be informed on your inquiry.



Packing instructions according to ISI OLDRATI N°4 Rev.0 dated 05/03/96

Item	Type	ØA	ØB	ØC	ØD	ØE	F	G	H	I	L	L1	M	RX	RY	RZ	M.Num/C
Elite A	2-3	65	45	60	80		70	135	5	3	1.8			10	30	4	3236/8
Elite B	5	65	46	85	105		85	155	5	3	1.8			10	42.5	4	3237/8
Elite C	8-12	66	47	97.5	116		105	200	5	2.5	1.6			12.5	48	3.5	0063/4
Elite D	8-12	66	47	97.5	116		105	200	5	2.5	2.5			12.5	48	3.5	0063/4
Elite E	12-18	66	45		114			262	5	3	2			20	30	2	0062/2
Elite F	15-20	110	82	120	150		110	200	4	4	2			10	60	4	3241/6
Elite G	18-24-30	110	82	112.5	220	40	150	230	3.5	3	1.8	4	40	20	2	1663/4	
Elite H	30-40	110	84	112.5	220	40	220	370	4.2	3.5	2	4	40	20	2	1797/1	
Elite J	40-50 EL	110	81	132.5	225	36	305	530	3.5	3	2.2	7	40	30	2	3230/1	
Elite K	60-80-100	114	84	130	250	40	330	580	4.2	2.5	2.2	7	47	20	3	1555/1	
Elite L	100-150	110	81	150	270	46	405	730	4.5	3.5	2.5	10	50	40	5	3242/1	
Elite M	150-200	110	85	180	300	50	505	850	6	3.2	2.5	7	100	40	40	1511/1	
Elite N	150-200 LF*	200	150	180	300	46	505	900	7	4	2.5	10	100	40	40	3243/1	
Elite O	300-450	200	150	250	450	100	575	900	7.5	4.5	3.3	4.3	8	120	60	40	1732/1
Elite P	500-700	200	150	250	500	50	730	1200	7.5	4.5	3.3	12	120	60	40	2676/1	
Elite Q	750-1500	200	150	300	550	50	855	1500	7.5	4.5	3.3	8	170	60	40	1735/1	
Elite S	1000-1500	260	198	365	680	50	1200	2000	8	4	3.2	8	200	100	40	3675/1	
Elite R	2000-4000	313	248	405	780	50	1500	2560	8	4	3.2	8	200	100	40	1411/1	



LF\*=LARGER FLANGE

24	UPDATE DRAWING	BD	MS	10/02/15														
22	UPDATE DRAWING	FD	MS	31/01/14	23	UPDATE DRAWING	FD	MS	10/06/14									
20	UPDATE DRAWING	FD	MS	06/02/13	21	UPDATE DRAWING	FD	MS	17/05/13									
POS.	MODIFICATIONS			DRN.	APPR.	DATE	POS.	MODIFICATIONS			DRN.	APPR.	DATE					
		<b>oldrati®</b> rubber & plastic products		THICKNESS TOLERANCES MARK WITH ** EPDM-SBR-NR-NBR >> +0.40 -0.40 BUTILE - KTWC >> +0.60 -0.60 GENERAL M/C LIMIT WHERE NOT SPECIFIED ISO 3302-1		SIZE A4 REPLACES No		SCALE 1:3 No 00		CODE No		PART No MemElit_rev24						
DRN.	Malaga			MATERIAL		TITLE		ELITE MEMBRANE / BLADDERS		MOULD No		CAD						
APPR.	Malaga			NUMBER		ONLY OLDRATI GUARNIZIONI INDUSTRIALI SPA IS AUTHORIZED TO CHANGE THE ORIGINAL DRAWING		DRAWING		NO MANUAL MODIFICATIONS								
CHD.				DATE		04/06/79												

Баки для которых годится мембрана	Замена мембран SE.FA
Баки 8-12 л	FOA0258-FOA0160
Баки 8-12 л	FOA0258-FOA0160
Баки 12-18 л	FOA0160-FOA0265
Бак 24 л фланец Ø140	FOA0204
Бак 35 л (большая горловина,- влезет ли?)	
Бак 50 л	FOA0301
Баки 80-100 л без отв Ø26 (L <sub>5</sub> 648)	FOA0302-FOA0303
Бак 100 л с отв Ø26 и 150 л без отв Ø26 (L <sub>5</sub> 918)	FOA0257-FOA0240
Бак 150 л без отв Ø26 (L <sub>5</sub> 918) (большая горловина,- влезет ли?)	FOA0240
Бак 200 л (L <sub>5</sub> 860)	FOA0276
Бак 300 л (L <sub>5</sub> 1007)	FOA0232
Бак 500 л (L <sub>5</sub> 1235)	FOA0233
Бак 1500 л с удлинителем (L <sub>5</sub> 2041)	FOA0242
Бак 3000 л (L <sub>5</sub> 2530)	