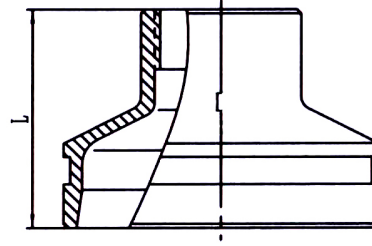


ПЕРЕХОД КОНЦЕНТРИЧЕСКИЙ РЕЗЬБОВОЙ ПОД МУФТУ:
50x1" – 200x4", 2.0 МПа, клеймо FM



Номин. размер, мм	Внешний диаметр трубы, мм	Номер продукта	Размер L, мм	Вес, кг	Номин. размер, мм	Внешний диаметр трубы, мм	Номер продукта	Размер L, мм	Вес, кг
50x1"	60,3x1"	TCR060R001*	64	0,40	125x1"	139,7x1"	TCR139R001*	89	0,94
50x1¼"	60,3x1¼"	TCR060R11/4*	64	0,45	125x1¼"	139,7x1¼"	TCR139R11/4*	89	0,87
50x1½"	60,3x1½"	TCR060R11/2*	64	0,50	125x1½"	139,7x1½"	TCR139R11/2*	89	1,10
65x1"	76,1x1"	TCR076R001*	64	0,50	125x2"	139,7x2"	TCR139R002*	89	1,03
65x1¼"	76,1x1¼"	TCR076R11/4*	64	0,55	125x2½"	139,7x2½"	TCR139R21/2*	89	1,07
65x1½"	76,1x1½"	TCR076R11/2*	64	0,60	125x3"	139,7x3"	TCR139R003*	89	1,35
65x2"	76,1x2"	TCR076R002*	64	0,65	125x4"	139,7x4"	TCR139R004*	89	1,40
80x1"	88,9x1"	TCR089R001*	64	0,60	150x1"	159,0x1"	TCR159R001*	102	1,45
80x1¼"	88,9x1¼"	TCR089R11/4*	64	0,65	150x1¼"	159,0x1¼"	TCR159R11/4*	102	1,44
80x1½"	88,9x1½"	TCR089R11/2*	64	0,65	150x1½"	159,0x1½"	TCR159R11/2*	102	1,45
80x2"	88,9x2"	TCR089R002*	64	0,70	150x2"	159,0x2"	TCR159R002*	102	1,87
80x2½"	88,9x2½"	TCR089R21/2*	64	0,80	150x2½"	159,0x2½"	TCR159R21/2*	102	1,87
100x1"	108,0x1"	TCR108R001*	76	0,85	150x3"	159,0x3"	TCR159R003*	102	1,87
100x1¼"	108,0x1¼"	TCR108R11/4*	76	0,85	150x4"	159,0x4"	TCR159R004*	102	1,80
100x1½"	108,0x1½"	TCR108R11/2*	76	0,85	150x1"	168,3x1"	TCR168R001*	102	1,68
100x2"	108,0x2"	TCR108R002*	76	0,90	150x1¼"	168,3x1¼"	TCR168R11/4*	102	1,75
100x2½"	108,0x2½"	TCR108R21/2*	76	0,95	150x1½"	168,3x1½"	TCR168R11/2*	102	1,80
100x3"	108,0x3"	TCR108R003*	76	0,95	150x2"	168,3x2"	TCR168R002*	102	1,97
100x1"	114,3x1"	TCR114R001*	76	1,00	150x2½"	168,3x2½"	TCR168R21/2*	102	1,65
100x1¼"	114,3x1¼"	TCR114R11/4*	76	1,05	150x3"	168,3x3"	TCR168R003*	102	1,55
100x1½"	114,3x1½"	TCR114R11/2*	76	1,06	150x4"	168,3x4"	TCR168R004*	102	1,50
100x2"	114,3x2"	TCR114R002*	76	1,14	200x1"	219,1x1"	TCR219R001*	127	3,45
100x2½"	114,3x2½"	TCR114R21/2*	76	1,23	200x1¼"	219,1x1¼"	TCR219R11/4*	127	3,50
100x3"	114,3x3"	TCR114R003*	76	1,30	200x1½"	219,1x1½"	TCR219R11/2*	127	3,55
125x1"	133,0x1"	TCR133R001*	89	0,94	200x2"	219,1x2"	TCR219R002*	127	3,60
125x1¼"	133,0x1¼"	TCR133R11/4*	89	0,87	200x2½"	219,1x2½"	TCR219R21/2*	127	3,88
125x1½"	133,0x1½"	TCR133R11/2*	89	1,10	200x3"	219,1x3"	TCR219R003*	127	3,88
125x2"	133,0x2"	TCR133R002*	89	1,03	200x4"	219,1x4"	TCR219R004*	127	4,00
125x2½"	133,0x2½"	TCR133R21/2*	89	1,07					

* - «P» или «G» «P» - крашенное (красное)
 «G» - антикоррозийное покрытие (оцинковка)